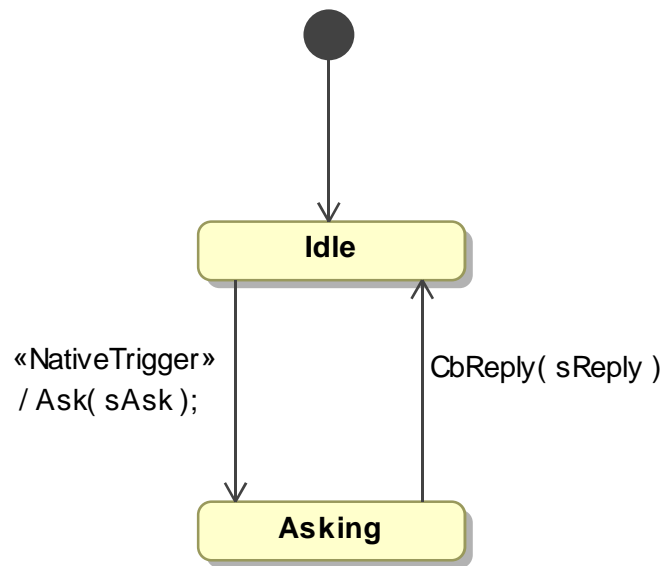
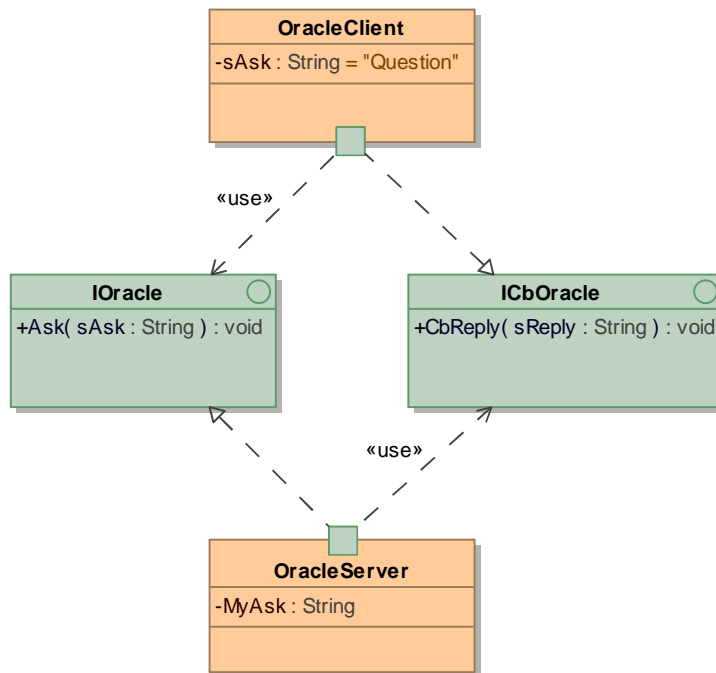
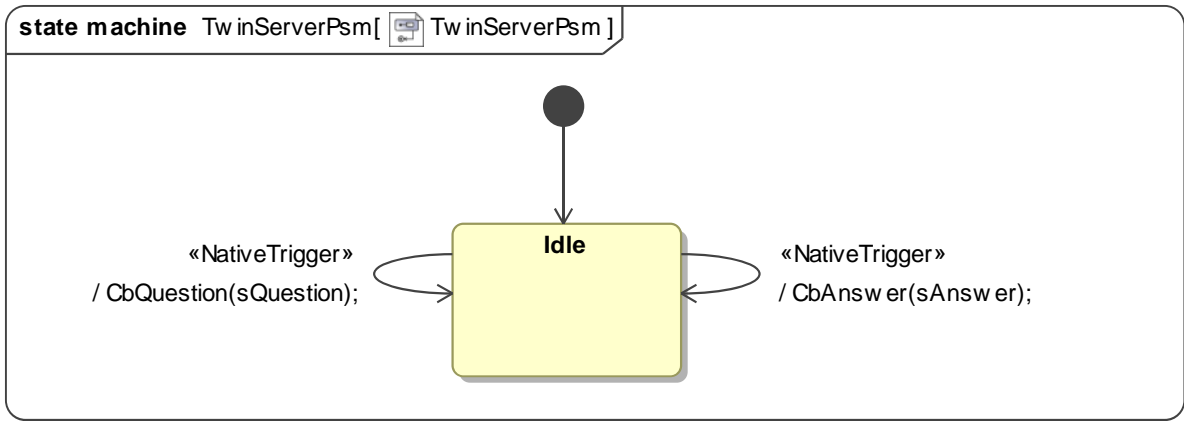


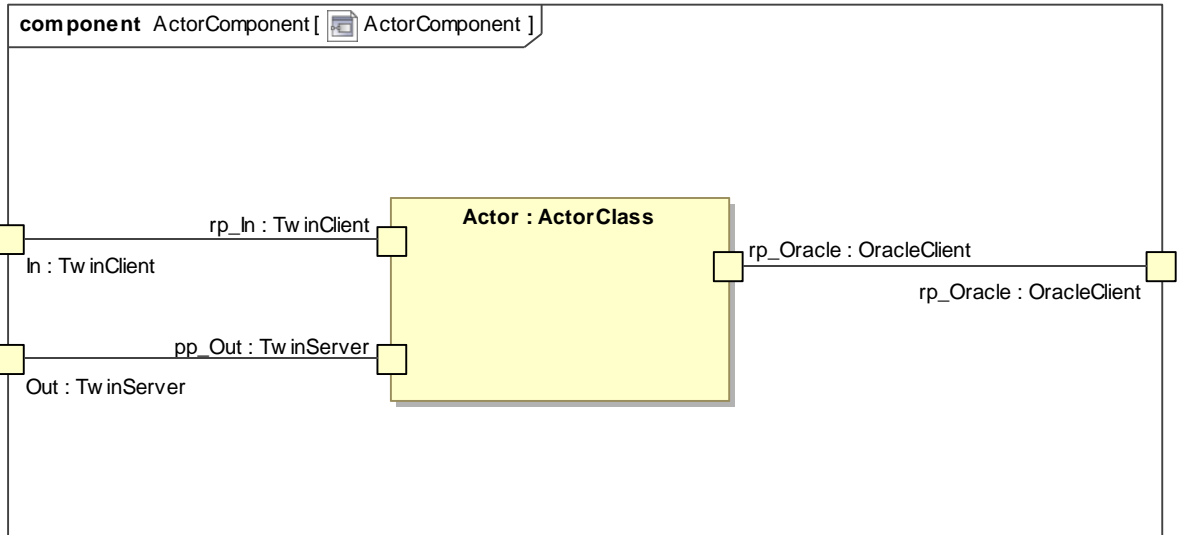
state machine OracleClientPsm[ OracleClientPsm]

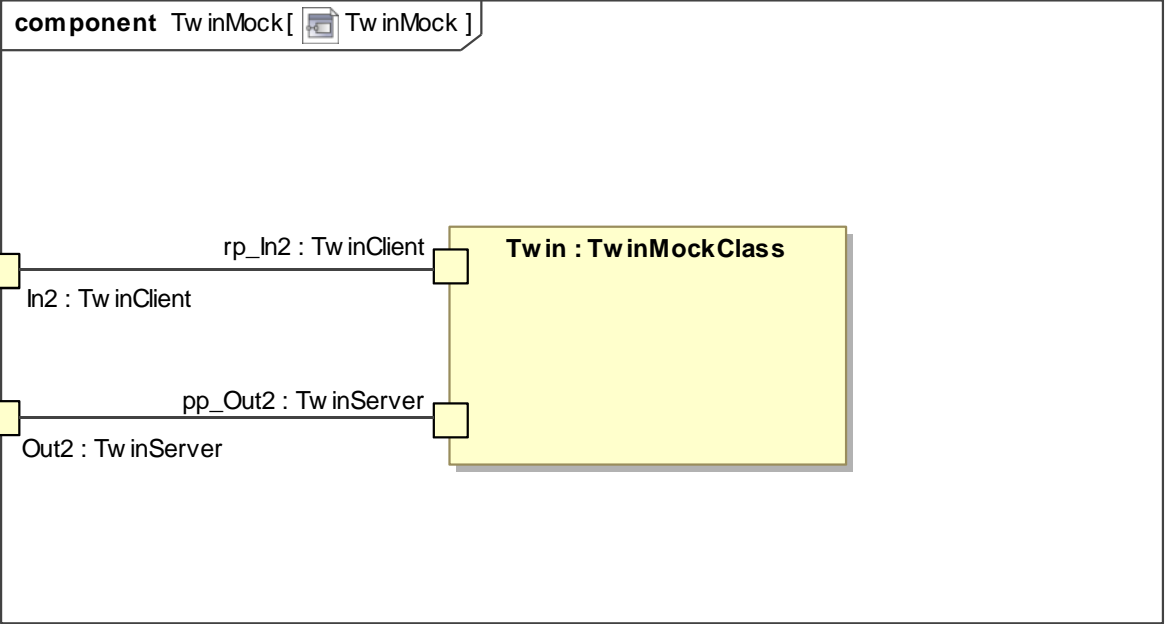


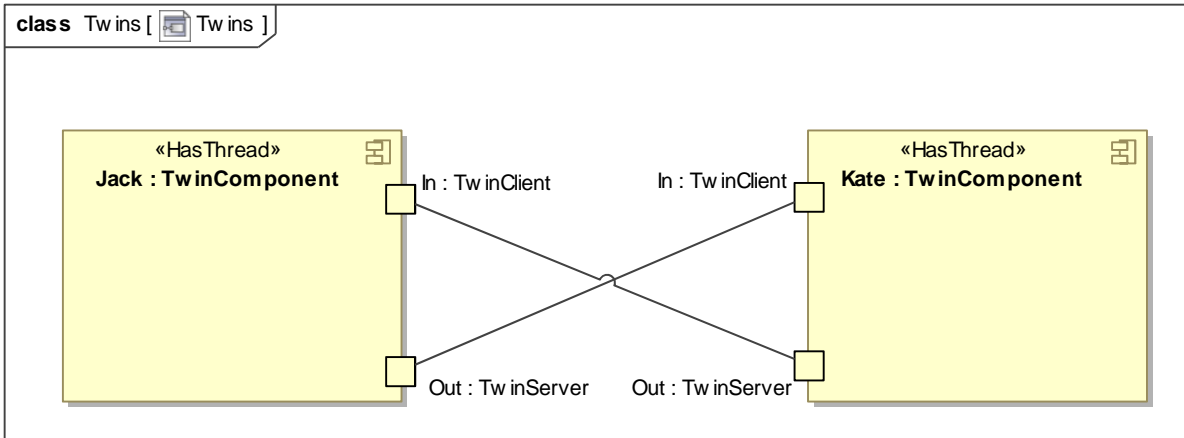
package OracleProtocol [OracleClasses]

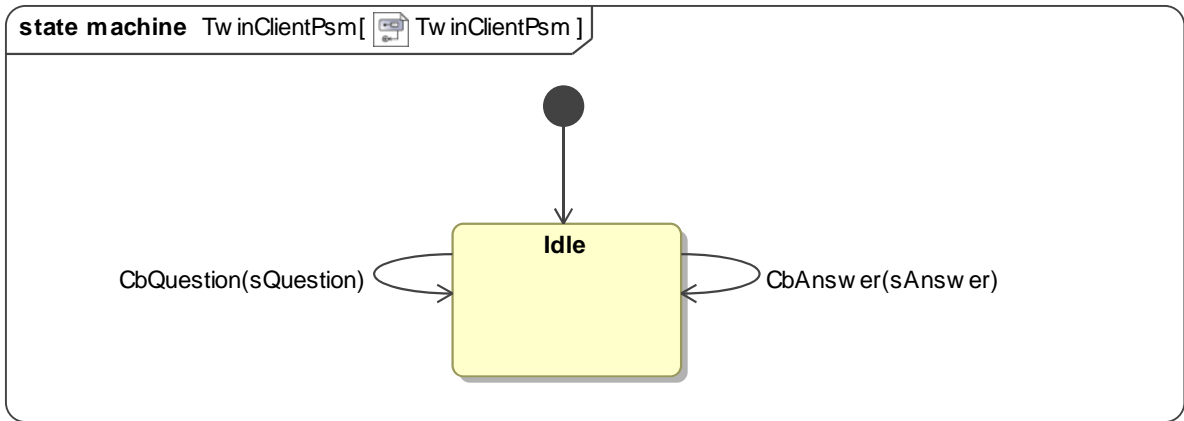




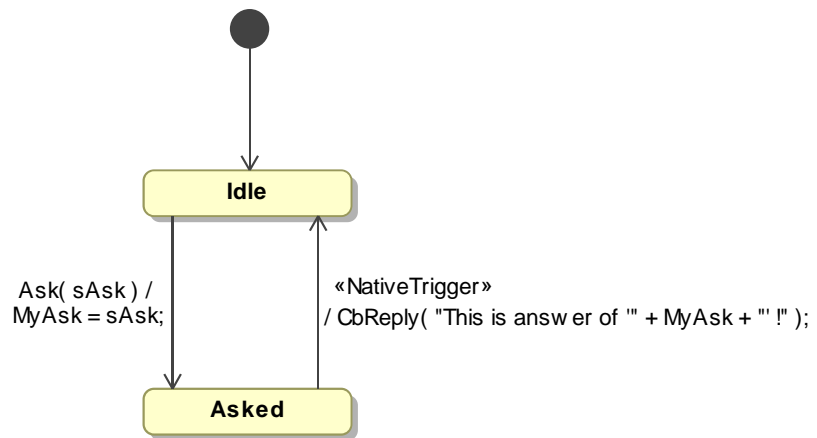




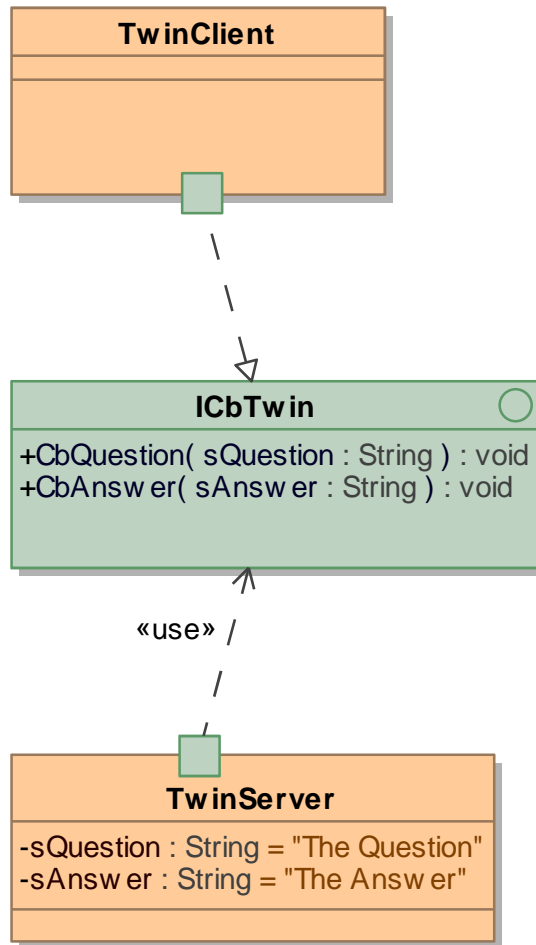


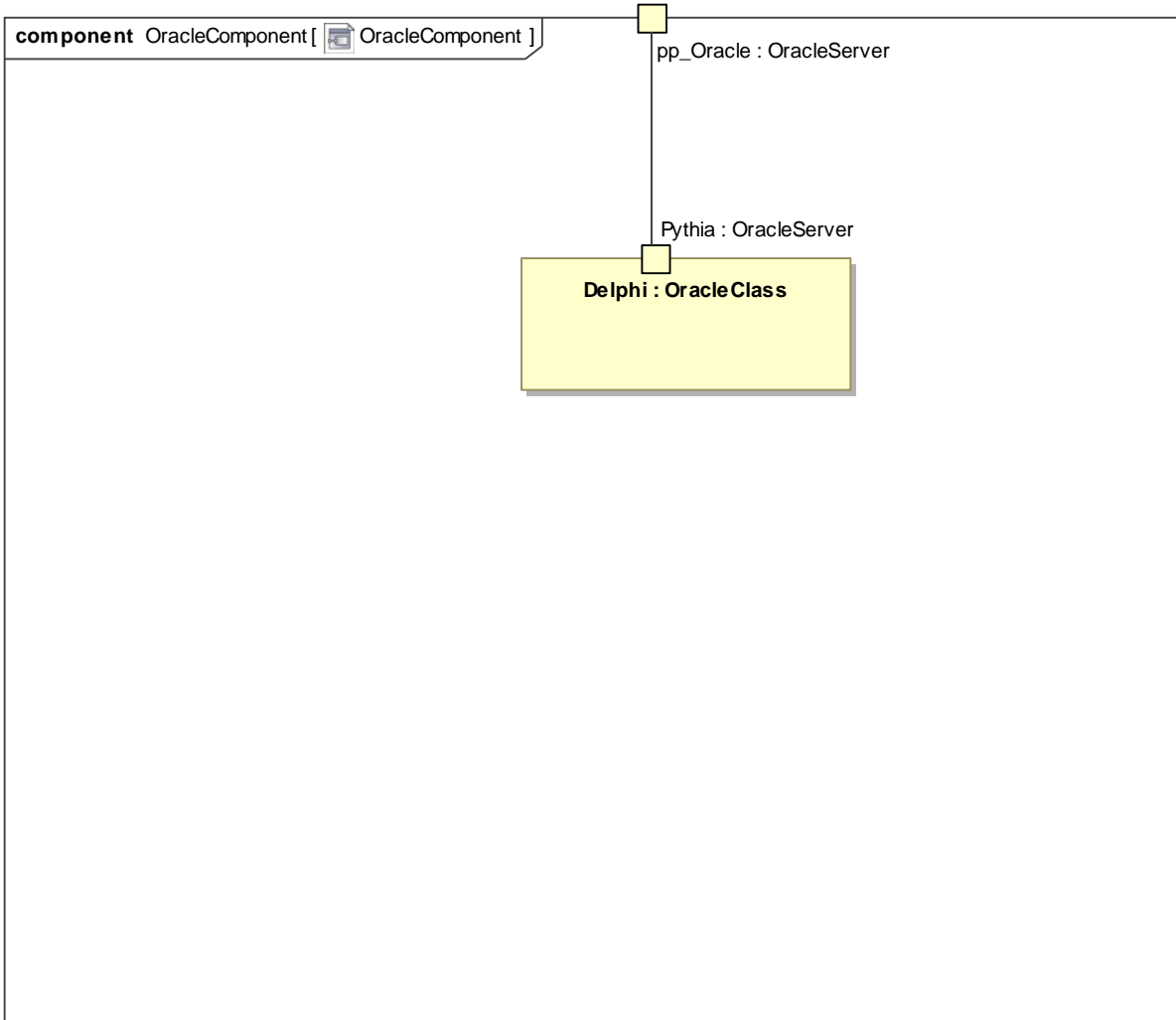


state machine OracleServerPsm [OracleServerPsm]

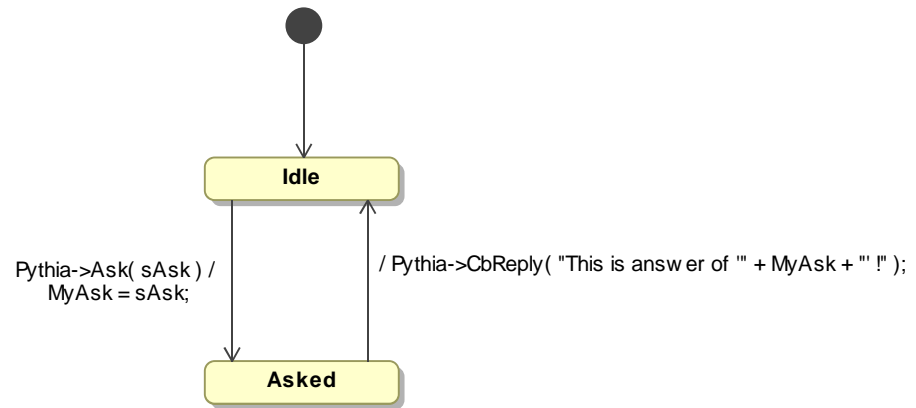


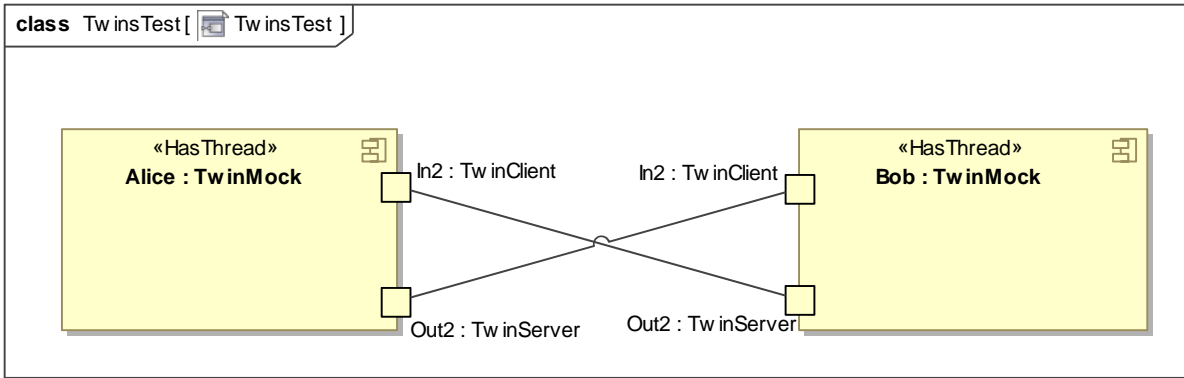
package TwinProtocol [TwinClasses]



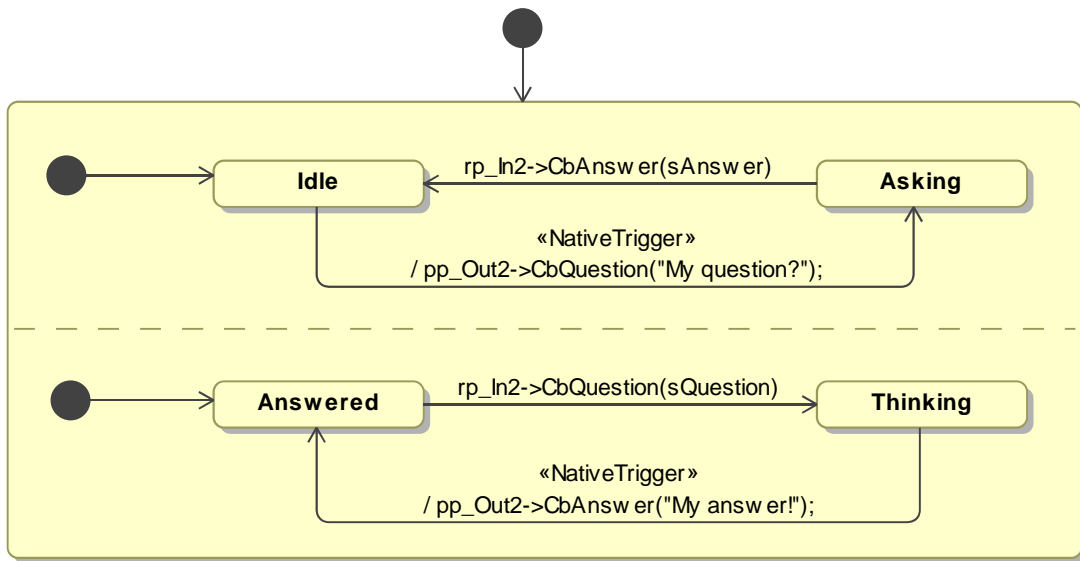


state machine OracleFsm[OracleFsm]

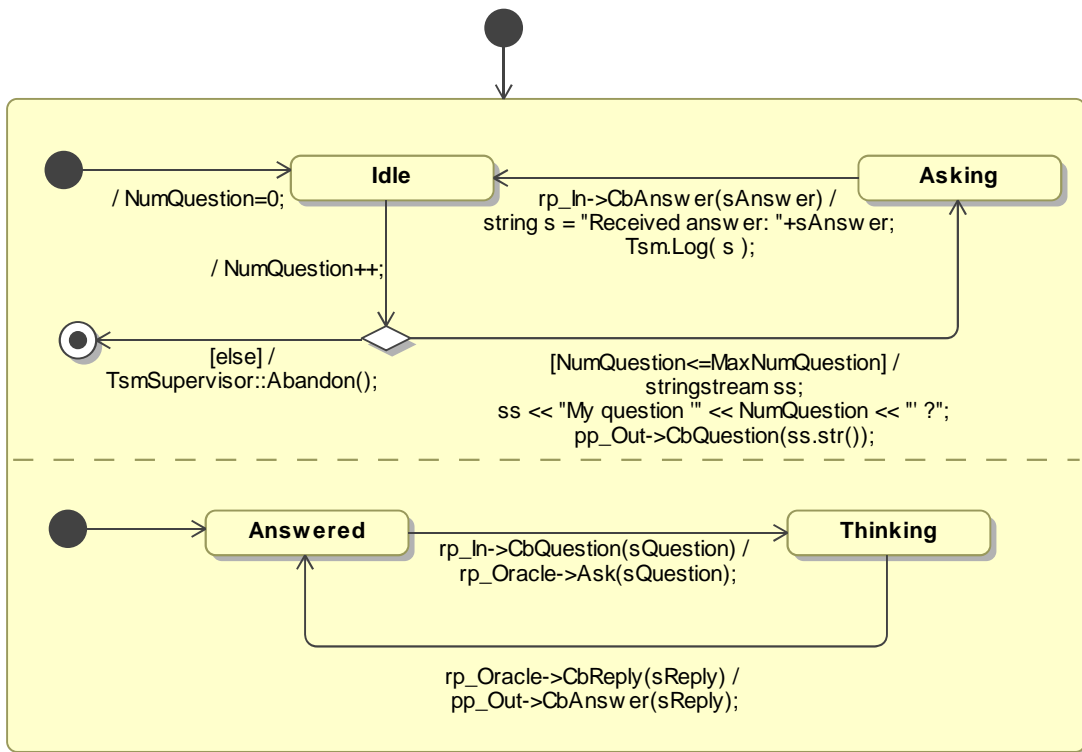




state machine TwinMockFsm [TwinMockFsm]



state machine ActorFsm[ActorFsm]



interaction Chat [Chat]

